

# Technical Data Sheet



**Product**

Yellow Glue Roll 15cm x 100m

**Product function**

Monitoring Pest Populations

**Code**

PCT-OPTIAU-Y15-231

Ref. No.

211118-02CG

## Description

Yellow glue roll should be used for the monitoring and control of flying insects in protected cultivations. Insects are attracted to specific colour wavelengths and use colour stimuli to find host plants, mating locations and oviposition sites. Russell IPM's yellow glue roll is highly attractive to a wide range of insect pests, which land on the sticky surface and become trapped.

### Specification:-

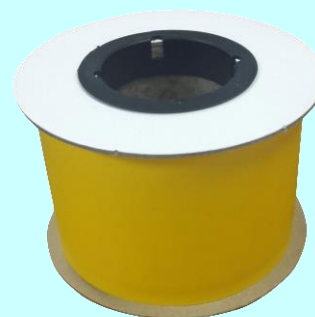
**Material:** Polypropylene Chromo-graphic Rolls

**Glue:** High-tech, non-drying adhesive, UV stable polyisobutylene

**Colour:** Yellow

**Dimensions:** 15cm wide x 100m long

**Target pests:** Whitefly (*Bemisia* spp. and *Trialeurodes* spp.), thrips (Thysanoptera), leaf miners (*Liriomyza* spp.), aphids (Aphidoidea) and sciarid flies (Sciaridae).



## Application

### Trap Application:-

Traps should be placed throughout the infested area, at a height where insect pests are most active. Attach yellow glue rolls securely to greenhouse posts or to crop wires/strings. For maximum effect, ensure that traps are stretched flat and hung vertically.

The best placement for yellow glue roll may vary for different crops. Ask your local agricultural authority for advice.

### When to use:-

Place traps from first planting until the end of the season.

For best effect, replace traps if the trapping surface is covered with insects or dust.

Yellow glue rolls are UV and sprinkler irrigation resistant.

**Trap density:** Place one roll every 500-1000m<sup>2</sup>.

## Storage

Store in a cool, dry place, out of direct sunlight.

## Precautions

Handle carefully, avoiding extensive contact with the glue.

Special care should be taken to avoid contact between sticky area of the roll and plant canopy. Wash hands with detergent after application.

Russell IPM Ltd,  
Unit 45, First Avenue,  
Deeside Ind. Park,  
Deeside, UK, CH5 2NU



+44 (0) 1244 281 333  
info@russellipm.com  
www.russellipm.com